

**Hecla Quebec
Casa Berardi Mine**



Increasing Productivity with MET



Background

1

**The
Challenge**

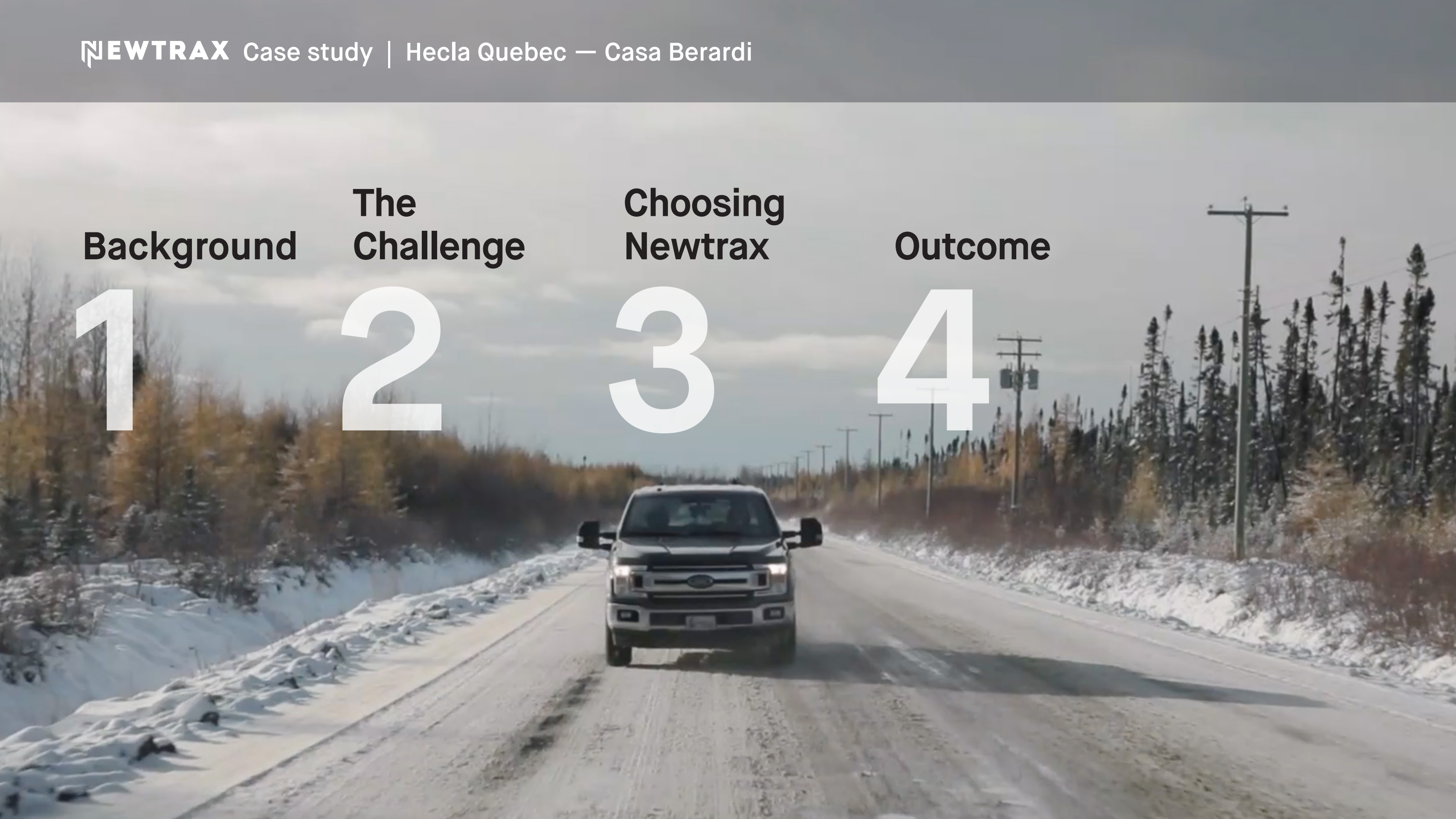
2

**Choosing
Newtrax**

3

Outcome

4



The Background

Hecla Mining's Casa Berardi is a gold mine and mill located in western Québec, some 95 kilometres north of La Serre. In 2018, the mine produced 130,647 ounces of gold and it has been in operation since 1989 and currently employs about 580 people.

The Challenge

Casa Berardi wanted to improve their productivity by reducing maintenance costs. To do that, the mine needed to cut down wear and tear on their equipment and they also needed to be able to monitor machines to catch equipment problems before they became major failures.





“In 2017, we started the telemetry project with Newtrax. We installed a solution on 24 vehicles, on trucks, on LHDs, in order to collect data remotely on our vehicles in operation.”

— Jérémie Frenette - Senior Electrical Supervisor - Project Manager - Hecla Québec - Casa Berardi Mine



“A vehicle, in the past, when you had to for example find an intermittent issue we were stuck with it for up to two weeks in order to recreate the problem, to diagnose it.”

— Vincent Corriveau - Mobile Equipment Mechanic - Hecla Québec - Casa Berardi Mine

Choosing Newtrax



Brake tests are an important step in keeping operators safe. Performing them daily insures a machine's brakes are in proper operating condition. And preventing overspeeds is critical

to preventing serious damage to transmissions. With Newtrax sensors, Hecla was able to monitor these in real time, so they were able to see when tests were being performed correctly.

Newtrax was also able to install a sensor suite that gave mechanical technicians the ability to more easily identify problems when a machine is brought in. It also makes it easier to monitor equipment to avoid problems before they develop into something more serious.



“When we started, we put a lot of emphasis on the behaviour of our operators and one of the types of data we were looking for was transmission abuse. And we started seeing some operators did not know why they were causing these alarms. So they were trained and changed their ways of operating the machines and it brought great results.”

— Sonny Melancon - Control Room Operator - Hecla Québec - Casa Berardi Mine

“Now with Newtrax, we can connect directly to the computer of the machine and can diagnose it when it is a lot farther in the mine site because the data of the machine is available in real time to compare with the other machines.”

— Vincent Corriveau - Mobile Equipment Mechanic - Hecla Québec - Casa Berardi Mine

The Outcome



After installing Newtrax systems, Casa Berardi was able to see savings in several key areas: Equipment availability, maintenance costs, efficiency, and overall safety.

Quick overview >>>

Saving **30 minutes** per shift thanks to fewer delays.

Drop in overspeeds by **10%**, and a **50%** drop in transmission abuse.

Saving **7.8%** overall in maintenance costs for every hauled tonne

The mine was able to go about **2% over** its budgeted quantities for the year

LHD availability has **increased 8%**

“I am proud to have implemented the Mobile Equipment Telemetry project with Newtrax, it enabled us to improve a lot of things: equipment availability, costs, maintenance, and safety throughout our operations.”

— Jérémie Frenette - Senior Electrical Supervisor - Project Manager - Hecla Québec - Casa Berardi Mine

“From the moment we were able to follow the equipment we realized that we were experiencing fewer delays. **We gained** about an hour per day of operations so **about 30 minutes per shift**. We experienced a **significant decrease of 10% of overspeeds on the transmission** and these kinds of abuses showed up right away.”

— Alain Grenier - Vice President and General Manager - Hecla Québec - Casa Berardi Mine

“For operator practices, we were able to **decrease transmission abuse by 50%** in the last four months. Which is a pretty important metric, as well as significant reductions in cost.”

— Jérémie Frenette - Senior Electrical Supervisor - Project Manager - Hecla Québec - Casa Berardi Mine

Barrière d'accès #2
Barrière d'accès #3 (Non présente)
Cone plugs **The Outcome**



“On the safety front, we used to rely on the good will of our operators. Now, when the brake tests are not performed, **we know it**, the technicians up in the control room alert the supervisors.”

— Alain Grenier - Vice President and General Manager - Hecla Québec - Casa Berardi Mine



“If we are able to intervene before a machine is down, what we have after nine months is a **savings of 7.8% in maintenance costs** per tonne of material hauled.”

— Alain Grenier - Vice President and General Manager - Hecla Québec - Casa Berardi Mine

“If we compare with last year, where we were not able to go above our budgeted quantities for our underground mine, this year we are **4% above our targets**. And of this 4%, I would say that half of that is attributed to Newtrax telemetry. If we compare an equivalent period of nine months in 2017 to 2018, we noticed that, for the LHDs especially, an **increase in availability of 8%**.”

— Alain Grenier - Vice President and General Manager - Hecla Québec - Casa Berardi Mine

newtrax.com

NEWTRAX



Global Headquarters

360 St-Jacques, Floor 8
Montreal (Quebec)
Canada H2Y 1P5
Phone: +1 514 288-6398

Worldwide 24/7

Customer Support
Email: support@newtrax.com
Phone: +1 514 288-6398
Toll Free: +1 877 NEWTRAX

Latin America

Rosario Norte 555 OF 904
CP: 7561211
Las Condes, RM (Santiago)
Chile
Email: latam@newtrax.com
Phone: +1 514 360-4312

Asia Pacific

Level 3, 191 St. Georges Terrace
Perth, WA, 6000, Australia
Email: apac@newtrax.com
Phone: +61 422 116 666

Canada & USA

Email: ca-usa@newtrax.com
Phone: +1 514 288-6398

Russia

10 Vozdvizhenka street,
Office 357 125009, Moscow
Email: russia@newtrax.com
Phone: +7495 1059237
Support: +7495 1059237 ext 102

Africa

Email: africa@newtrax.com

Europe & Middle East

Email: eu-me@newtrax.com

Press or Media Inquiries

Email: info@newtrax.com
Phone: +1 514 288-6398 x 232